

From: [Baxter, Ronald](#)
To: [Pat Deibert](#); [Lief Wiechman](#); [Ted Koch](#); [Mary Grim](#)
Subject: Fwd: NV-NECA GRSg habitat within Super PACs
Date: Wednesday, January 14, 2015 2:50:51 PM
Attachments: [BER GRSg Habitat DEIS and Super PACs.pdf](#)
[PAC & GRSg Habitat with acres.pdf](#)

All - URGENT!

Here are the maps just done by BLM for the superpacs. Acreages are also shown below the image. Mary would like to schedule a phone call regarding these this afternoon if possible. Please text or email her ASAP to let her(us) know of your availability.

Thanks,

Ron

----- Forwarded message -----

From: **Leisa Wesch** <lwesch@blm.gov>
Date: Wed, Jan 14, 2015 at 1:40 PM
Subject: NV-NECA GRSg habitat within Super PACs
To: Ronald Baxter <ronald_baxter@fws.gov>

Ron

Here are two maps – the one I showed you in the meeting and the other is the BER Habitat vs the Super PAC's

This one shows what I told you that the Super PACs line up with the original BER GRSg Habitat layer.

Leisa Wesch

GIS Specialist – Greater Sage Grouse Project

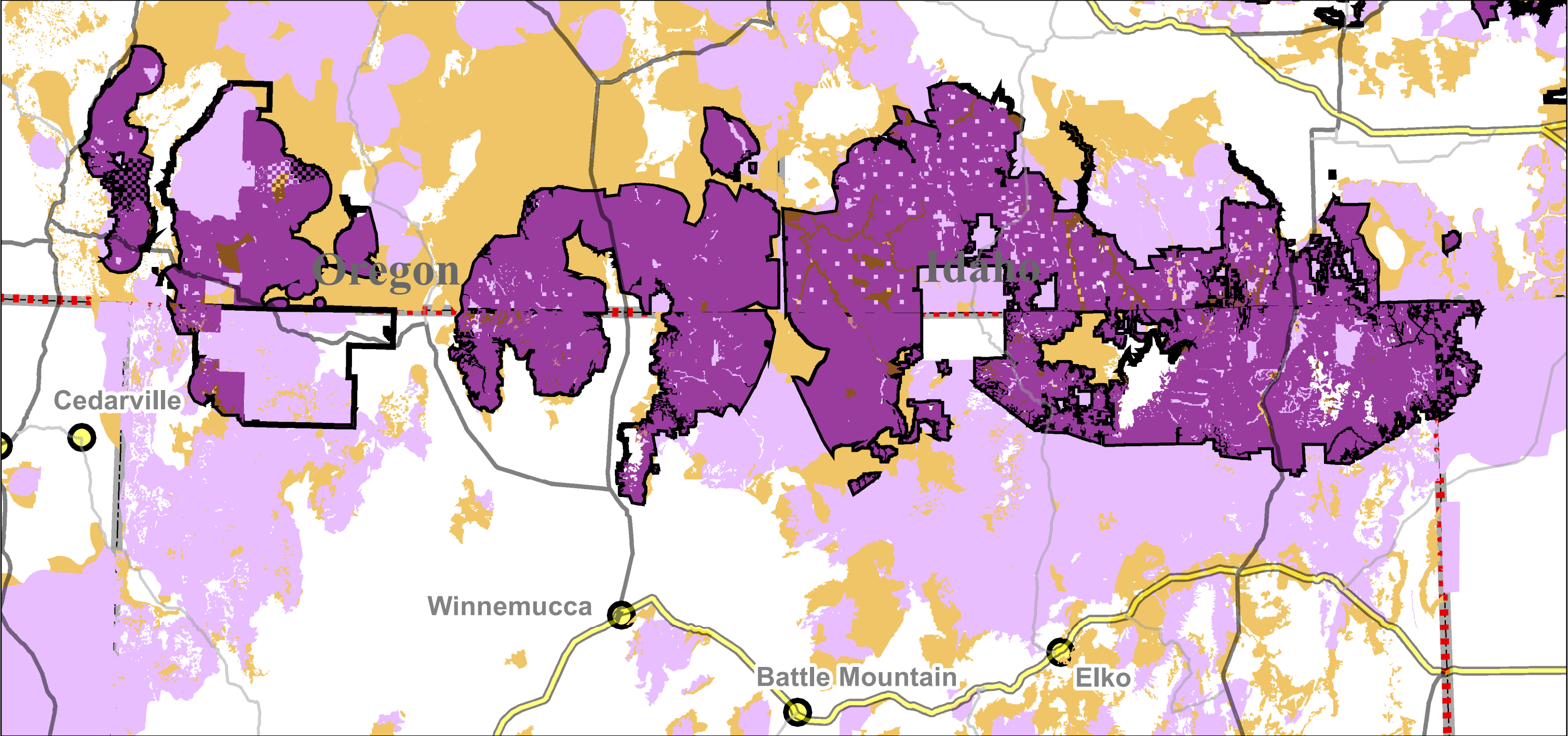
BLM- NVSO

775-861-6421

--

Ronald J. Baxter
Endangered Species Biologist
U.S. Fish and Wildlife Service
1340 Financial Blvd., Suite 234
Reno, NV 89502
(775) 861-6377 (office)
(951) 237-8404 (cell)

Super PACs vs BER GRSG Habitat Layer (DEIS)

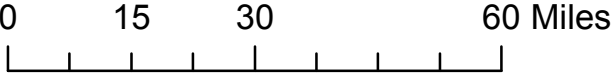


Overview Map



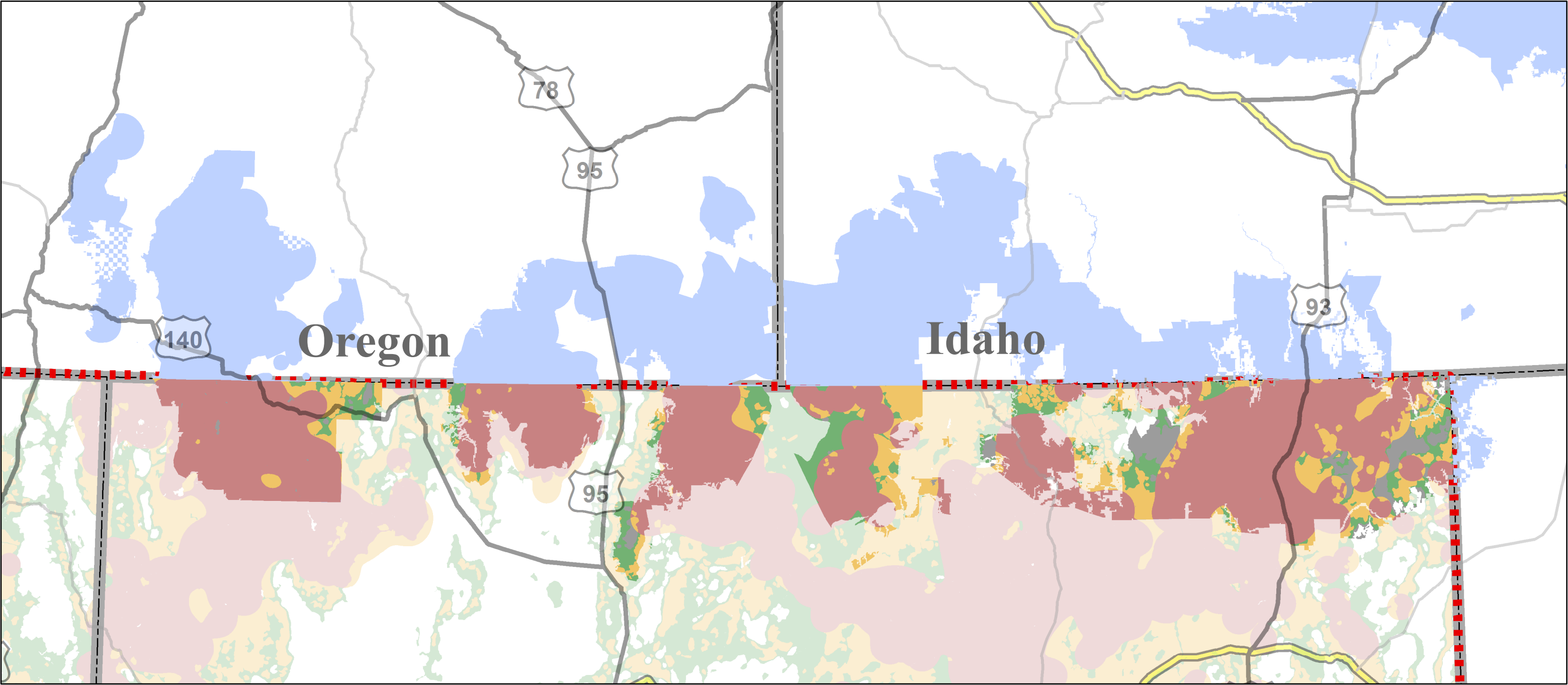
Legend

- USFWS Areas of Significance for GRSG (Super PACs)
- BER_SG_PPH_PGH_base (DEIS)**
- Habitat_Type**
 - PPH - all landstatus
 - PGH - all landstatus
- BER_SG_Habitat_SuperPACs**
- Habitat_Type**
 - PPH - BLM/FS only
 - PGH - BLM/FS only





NV-NECA GRSG Habitat with Priority Area of Conservation (PAC)



Overview Map



Legend

- Management**
- PHMA
 - GHMA
 - OHMA
 - Non-Habitat
 - Out-side NV-NECA

Habitat Type (All Landstatus)	Acres
PHMA	2,541,991
GHMA	539,339
OHMA	311,340
Non-Habitat	162,565
Grand Total	3,555,235

Habitat Type (BLM/FS Lands only)	Acres
Core	1,960,705
Priority	445,691
General	271,522
Non-Habitat	147,876
Grand Total	2,825,795

